

## RCOTS COLOR INKJET PRINTER

## MODEL 1100



Model 1100 is a Rugged COTS color inkjet printer utilizing the latest generation commercial off-the-

shelf print engine. This printer will save time and resources with rapid start up times, print speeds up to 36 ppm, by accepting multiple paper sizes, and with optimized photo quality printing.

As with all NOVA Integration Solutions (NIS) RCOTS printers, this model leverages many design features/techniques used in NIS's military-tested printer models. Thus, the 1100 is designed to meet numerous military specifications, is housed in a lightweight and rigid enclosure, and has low power consumption making this unit ideal for a variety of high-reliability and harsh environment applications.

Standard options available include 18-36 VDC input power and 19" rackmount kits. Model 1100 can also be equipped with an internal heating element that would extend the low end of the operating temperature range to -20°C. Various I/O and connectorization options are available, custom mounting schemes, and paint color and texture options abound. Taken in toto, the 1100 is truly fit for any application at an affordable price.

NOVA is proud that NASA has selected the 1100 for duty aboard the specially-configured 747 that ferries the Space Shuttle from Edwards Airforce Base (CA) to Cape Kennedy (FL).

For more information on our wide range of capabilities, products, and services, please visit our web site at:

[www.novaintegration.com](http://www.novaintegration.com)



- 4800 X 1200 dpi Optimized Photo Quality Color Printing
- Up to 36 ppm Black and 27 ppm Color
- 32 MB installed memory
- Network and USB interfaces are standard
- Designed to meet MIL-STD-810F Shock & Vibration
- Designed to meet selected emitted and conducted emissions per MIL-STD-461E
- Designed to meet MIL-STD-1686A ESD
- High-strength aluminum alloy housing with positive latching access doors
- Ideal for rugged environment applications
- Tabletop or optional rackmount configurations
- Low power consumption
- Optional DC input power
- Light-weight and compact footprint

## SPECIFICATIONS

## ENVIRONMENTAL CHARACTERISTICS

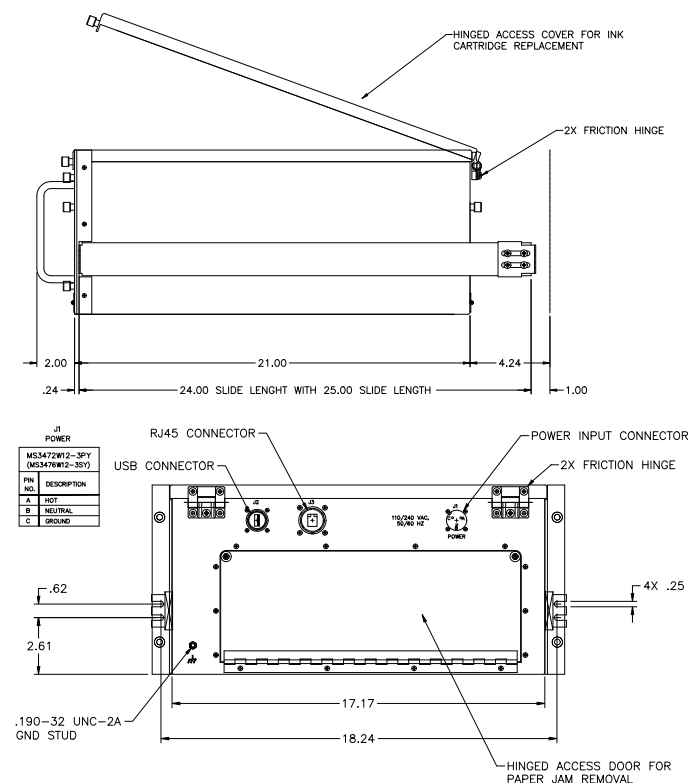
Temperature, operating	+5°C to +50°C (-20°C to +50°C with optional heater and NOVA's System Monitor)
Temperature, non-operating	-20°C to +70°C (ink cartridges removed)
Humidity	10% to 95%, non-condensing
Altitude, operating	-1,500 ft. to 15,000 ft.
Altitude, non-operating	-1,500 ft. to 40,000 ft.
Vibration, operating	designed to meet MIL-STD-810G, Method 514.6, Proc I
Vibration, non-operating	designed to meet MIL-STD-810G, Method 514.6, Proc I, Secured Cargo, Basic Transportation
Shock, operating	designed to meet MIL-STD-810G, Method 516.6, Proc I
Shock, non-operating	designed to meet MIL-STD-810G, Method 516.6, Proc V & VI
Bench Handling	see "Shock, non-operating"
Inclination	0° to 30° in any axis
EMI/EMC	designed to meet selected emission criteria per MIL-STD-461E
ESD	MIL-STD-1686A

## PHYSICAL CHARACTERISTICS

Size.....8.75 in H x 17.5 in W x 21 in D

Weight.....28 lbs

Mounting configurations.....Tabletop; rackmount; ARINC shock tray  
(DO-160)



## PERFORMANCE CHARACTERISTICS

Resolution.....	4800 X 1200 dpi color 1200 x 1200 dpi black
Print Speed.....	27 ppm color 36 ppm black
Memory.....	32MB (non-expandable)
Languages and Fonts.....	H-P PCL Level 3 HPA
Paper Size.....	Letter, legal, executive, envelopes Custom sizes 3" x 5" to 8.5" x 24"
Paper Input.....	150-sheet input tray

## ELECTRICAL CHARACTERISTICS

Input Power, standard . . . . .	110 - 240 VAC @ 47-63Hz
Input Power, options. . . . .	{1} 115VAC @ 60/440 Hz; or {2} 230VAC @ 50Hz; or {3} 18-32 VDC
Power Consumption. . . . .	Printing @ 50W; Standby @ 5W
Data Interfaces . . . . .	Fast Ethernet via D38999, and USB 2.0 via separate D38999

## ORDERING TABLE

Common Specifications..... Up to 36 ppm  
4800x1200 dpi  
USB & 10/100 Ethernet.

<b>95-1100-05000-001</b>	100-240 VAC @ 47-63 Hz, 50 W consumption; Tabletop
<b>95-1100-25000-001</b>	100-240 VAC @ 47-63 Hz, 50 W consumption; Rackmount
<b>95-1100-45000-001</b>	100-240 VAC @ 47-63 Hz, 50 W consumption; ARINC Shock Tray Mount
<b>95-1100-07000-001</b>	18-36 VDC input (MIL-STD-704); Tabletop (Rackmount and ARINC shock tray mounts also available)

